



Partners *for* Education

BEREA COLLEGE

**Promoting Postsecondary
Educational Success in the
Promise Neighborhood**



Berea College

- is a small, private, liberal arts college;
- founded by ardent abolitionists and radical reformers in 1855;
- with an institutional commitment to Appalachia;
- pledged to creating service oriented leaders for Appalachia and beyond.



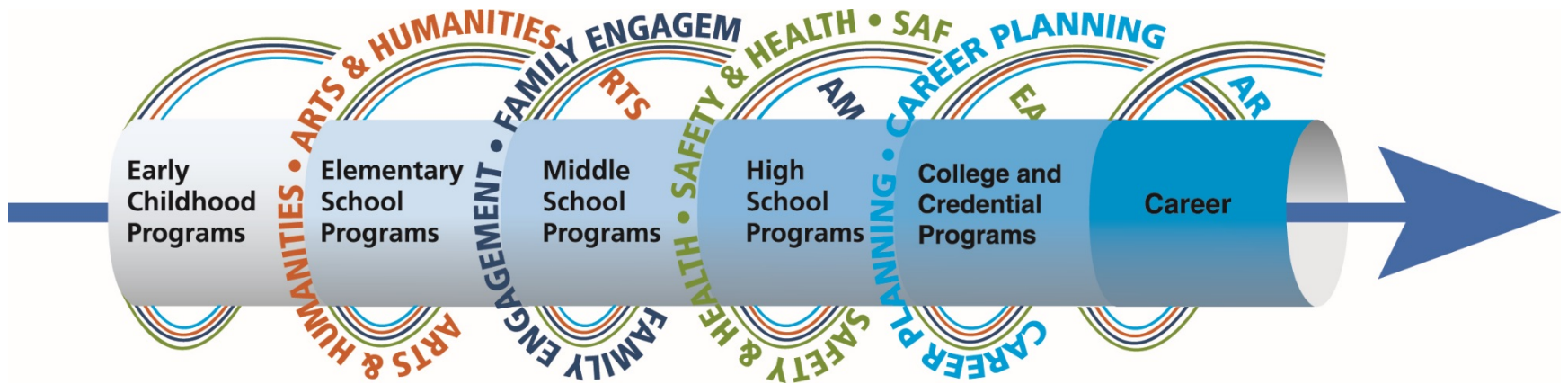
Berea College Promise Neighborhood

- Partners for Education works toward the end result: All Appalachian Kentucky youth succeed in school.
- Berea College Promise Neighborhood serves three counties in 961 square miles.
- In 2009, 41% of the Neighborhood graduates entered college.



Partners for Education

Theory of Change: Cradle to Career





Challenges to Success

Academic Challenge: Lack of preparation for college rigor

Financial Challenge: Transportation (money for gas, reliable vehicle, etc.)

Social and Cultural Challenge: Family responsibility



Building a College-Going Culture

- ✓ Foster the expectation of postsecondary education for ALL students
- ✓ Help students focus on career pathways and establish long-term goals.
- ✓ Provide support programs to assist them in achieving their goals.
- ✓ Educate students and their families about the importance of GPAs and test scores.



Building a College-Going Culture

- ✓ Have ongoing discussions with students and families about the role of postsecondary education and steps for future opportunities.
- ✓ Facilitate early conversations with students about college and strategies for overcoming obstacles in reaching their academic and career goals.
- ✓ Create avenues for students to be more involved with the process and have peer-to-peer interactions.



Building a College-Going Culture

- Classroom Information Sessions
- Individual Planning and Advising Meetings with Seniors
- College and Career Workshops
- College and Career Tours





Our Vision

The vision for Promise Neighborhood Postsecondary Transition Support is to provide senior students in Clay, Jackson and Owsley counties with tailored activities and resources to assist in their successful transition beyond high school to college and career training through a focus on relationship building and support services.





Synergy Program

Designed to work in partnership with local community colleges and four-year college regional campuses to support students with the admission, registration and financial aid processes through a series of structured, one-day activities.



Transition Support

- ✓ Partnerships with local colleges and universities, community-based agencies and public service organizations.
- ✓ Helping students identify common pitfalls for college students and developing strategies for addressing these issues.
- ✓ Building trust relationships with students and their families.
- ✓ Providing mentorship.



Transition Support

- ✓ Identifying needs and working to eliminate the barriers for going to college
- ✓ College preparation workshops (financial aid, ACT testing) and college campus tours
- ✓ Assistance with completing college applications and FAFSA
- ✓ College backpack rally



Retention Strategies

- ✓ Address challenges to success and transition support topics appropriately.
- ✓ Assess individual student needs and assist them with developing strategies to minimize known barriers.
- ✓ Help students effectively navigate the system in order to meet challenges and achieve success.



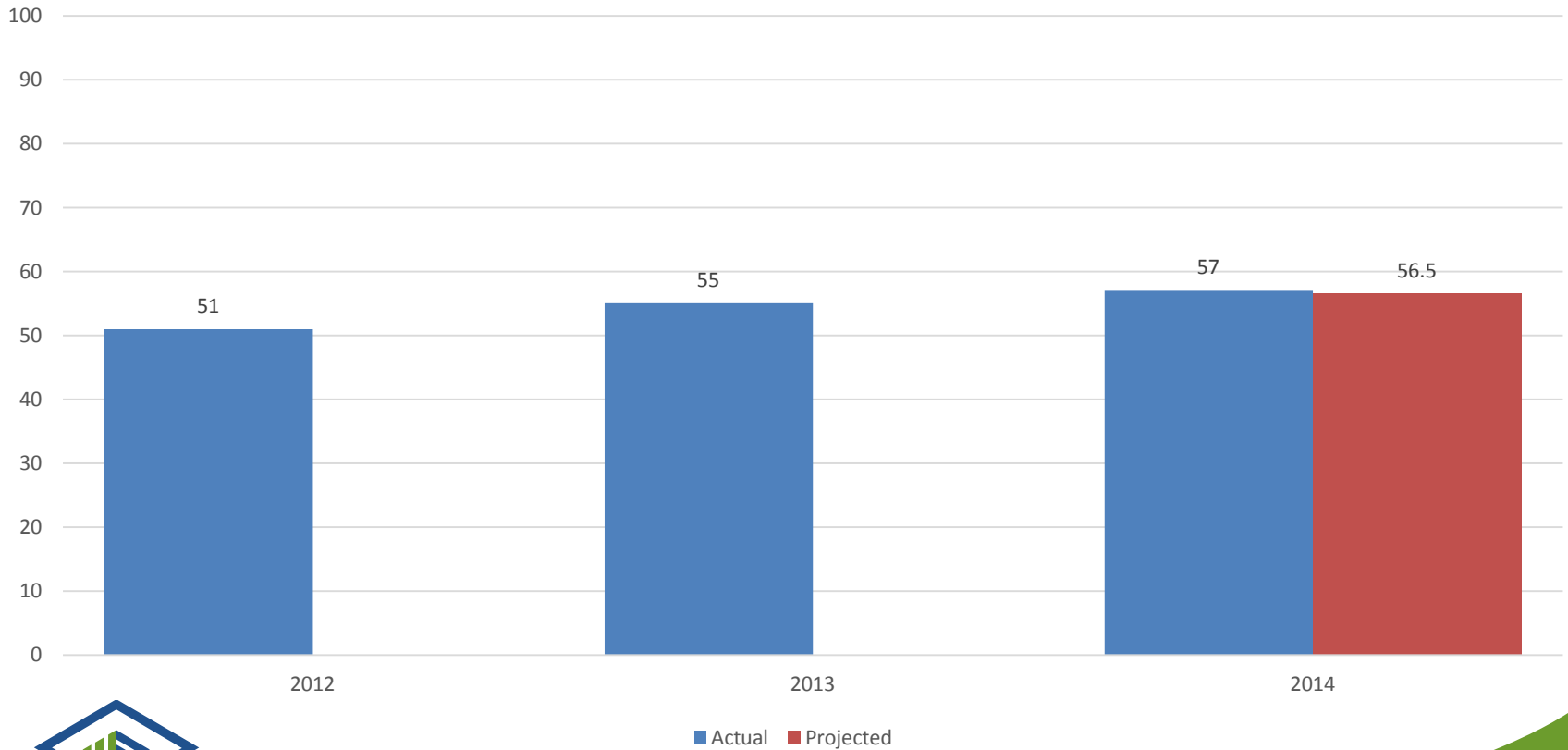
Braiding of Services

- ✓ Collaborating services both internally and externally to provide consistent support for postsecondary transitioning.
- ✓ Making clear connections for students and their families through multiple communication sources of the resources available to aid in their success.
- ✓ Partnering with Family Engagement Specialists to involve parents and families.
- ✓ Effective communication across programs about potential collaborative projects/services.



Promise Neighborhood Postsecondary Enrollment Results

Postsecondary education
Percent enrolled in postsecondary education





Bridging the Gap

- Transition Leadership Team
- Summer Bridge Program
- College & Vocational Support
 - On-Campus Support
 - Student Contacts



Contact Information

www.partners.berea.edu

Beth Dotson Brown

Project Director - Promise Neighborhood

Partners for Education

Berea College

brownbe@berea.edu

859.985.4163



Partners *for* Education

BEREA COLLEGE