

# Rompecadenas Chainbreaker



**Cathy Garcia**

**Communications Organizer**

**Rompecadenas** es una organización de justicia económica y medioambiental basada en sus miembros. Trabajamos para ampliar el acceso al transporte asequible y a las comunidades sostenibles para los trabajadores de la región de Santa Fe, NM.

**Chainbreaker** is a member-based economic and environmental justice organization. We work to expand access to affordable transportation and sustainable communities for workers in the Santa Fe, NM region.



# Displacement is a Civil Rights Issue

**Gentrification, Displacement, and Dispossession** are the historical, current and future harms.

Historically and currently, gentrification disproportionately affects communities of color.

**Gentrification** occurs in areas of historic disinvestment. This leads to an increase in housing costs – for rent or sale.

Nationally, about 40% of Black and Latino households experience housing insecurity, compared with 25% of the general population.

Influx of residents with more income, resources, access, and political power. → **Displacement** of renters, low-income residents and people of color.

Santa Fe has a long and continuous history of displacement of Latino residents through several waves of gentrification.



Half of renters in Santa Fe are **rent burdened**, or pay more than 30% of their income on rent.

Nearly a quarter are **severely rent burdened**, or pay more than 50% of their income on rent.

# THIS IS NEW MEXICO

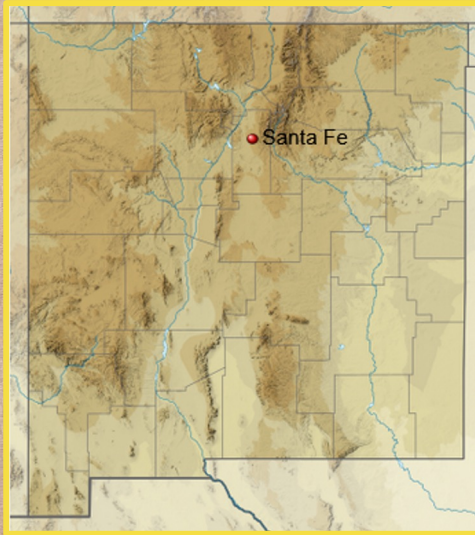
**Area:**  
121,591 sq mi (314,915 km<sup>2</sup>)

**5th** largest state, by area



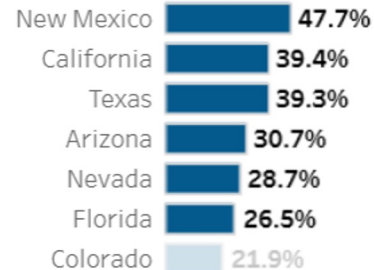
**36th** largest state, by pop.

**46th** largest, by density



## Percent Hispanic or Latino by State: 2020

### U.S. States



## NM Population

1980	1,302,894
1990	1,515,069
2000	1,819,046
2010	2,059,179
2020	2,117,522

## SF Population

1980	48,053
1990	52,303
2000	61,109
2010	67,947
2020	87,505

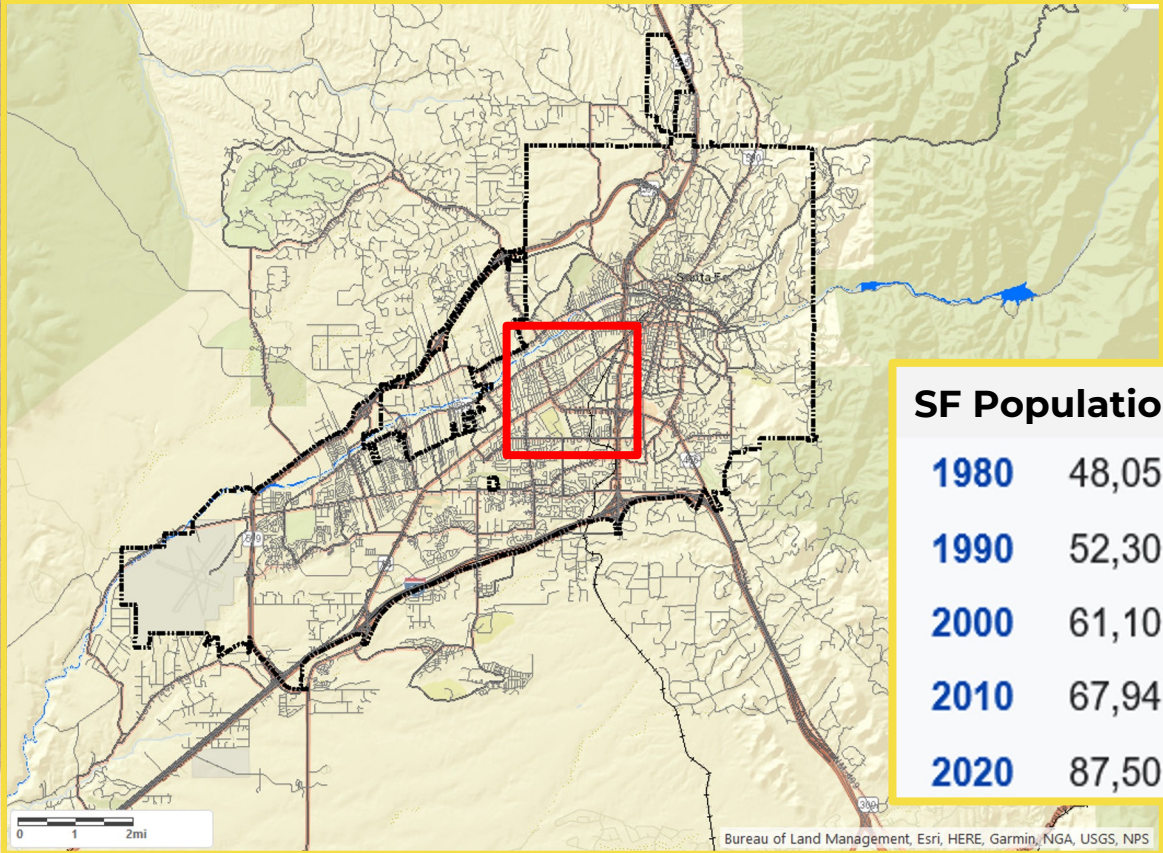
### CITY, STATE

### COMPARED TO NATIONAL AVERAGE

Albuquerque, New Mexico	-7.5%
Las Cruces, New Mexico	-11.0%
Rio Rancho, New Mexico	-7.8%
Santa Fe, New Mexico	+3.1%
Roswell, New Mexico	-13.5%



# THIS IS SANTA FE



**Time Immemorial** -  
Oghá P'o'oge  
**1610** - Spanish  
establish Santa Fe  
**1912** - Statehood

**Area**  
52.34 sq mi (135.57 km<sup>2</sup>)

### SF Population

<b>1980</b>	48,053
<b>1990</b>	52,303
<b>2000</b>	61,109
<b>2010</b>	67,947
<b>2020</b>	87,505

### Area Median Income

	<b>1 Person</b>	<b>2 Person</b>
30%AMI	15,350	17,550
50%AMI	25,550	29,200
65%AMI	33,250	38,000
80%AMI	40,900	46,750
<b>100%AMI</b>	<b>51,150</b>	<b>58,450</b>
120%AMI	61,400	70,150



# Residents Bill of Rights

5 Pillars to “inform, guide, and direct all housing planning decisions and policies”

City of Santa Fe Resolution No. 2015-65  
Passed Unanimously – July 29, 2015

[LINK](#) - Summary of Residents Bill of Rights, 2015

[LINK](#) - Text of Full Santa Fe City Resolution, 2015

[LINK](#) - Equitable Development & Risk of Displacement: Profiles of Four Santa Fe Neighborhoods, 2015

# People's Platform

A Policy Guide for  
Development Without  
Displacement

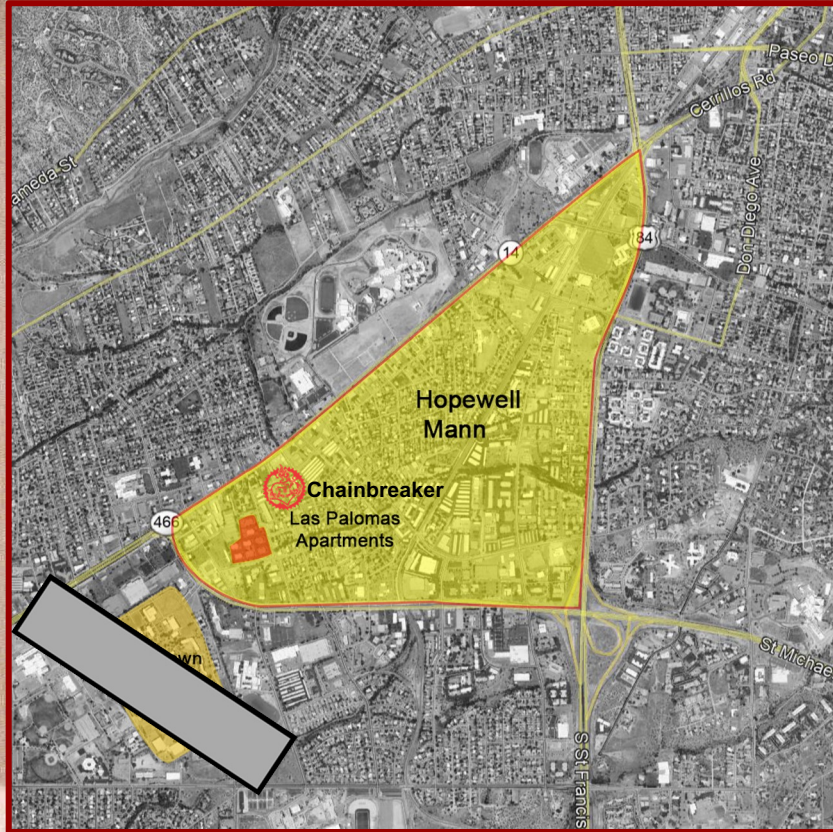
10-Point Platform

[LINK](#) - Summary of  
People's Platform, 2017





# THIS IS MIDTOWN



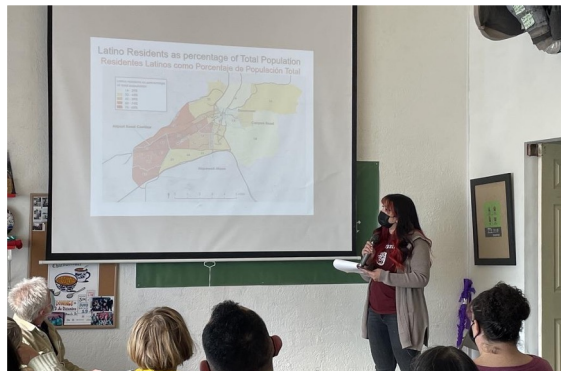
[LINK](#) - Evictions in the COVID-19 Era: A threat to family and community health in Santa Fe, **2020**

[LINK](#) - Health, Healing, and Housing in Santa Fe: A research brief on community land trusts, Midtown, and a vision for post-pandemic development, **2020**

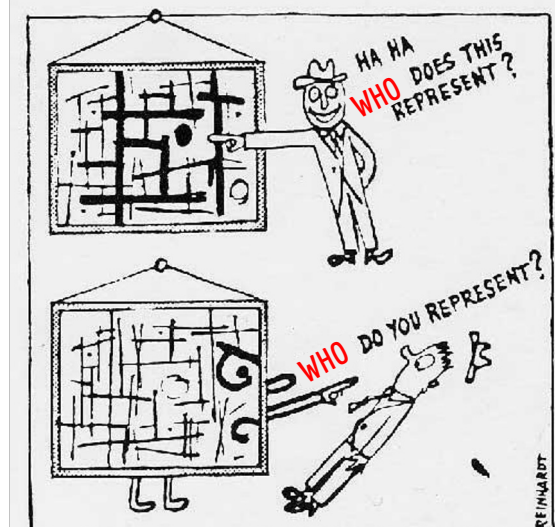
[LINK](#) - Beyond Recovery: Policy Recommendations to Prevent Evictions and Promote Housing Security in Santa Fe, **2021**

- **64 acres of City-owned land** in the Heart of Santa Fe.
- A potential of up to **100 acres total** for development.
- May qualify for federal funds to address “Blight.”





# DATA GIVES THE FACTS PEOPLE TELL THE TRUTH



Ad Reinhardt, How to Look at Modern Art (detail), 1946



[LINK](#) - Article, **The Nation**, How the Pandemic Threw Fuel on a Growing Housing Movement, **2022**

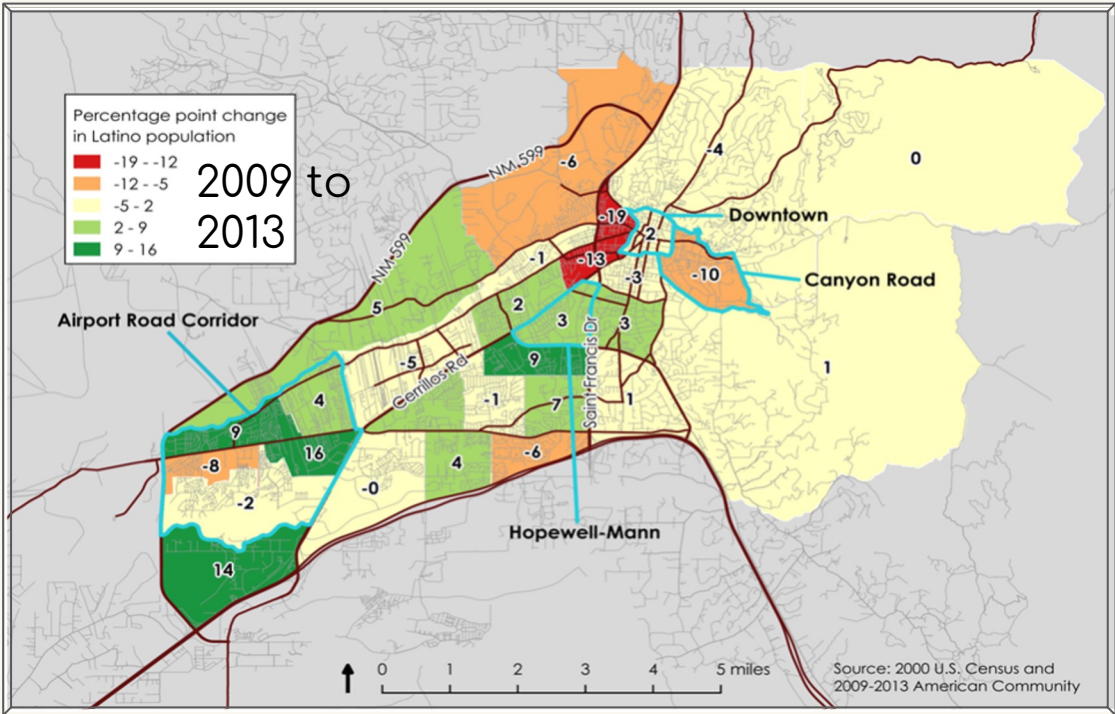
# POPULATION

## Totals

- By Tract, *Sprawl, Growth*
- Density, *Needs, Zoning*

## By Race

- Percent of Population, *Segregation*
- Percent Change Over Time, *Displacement*





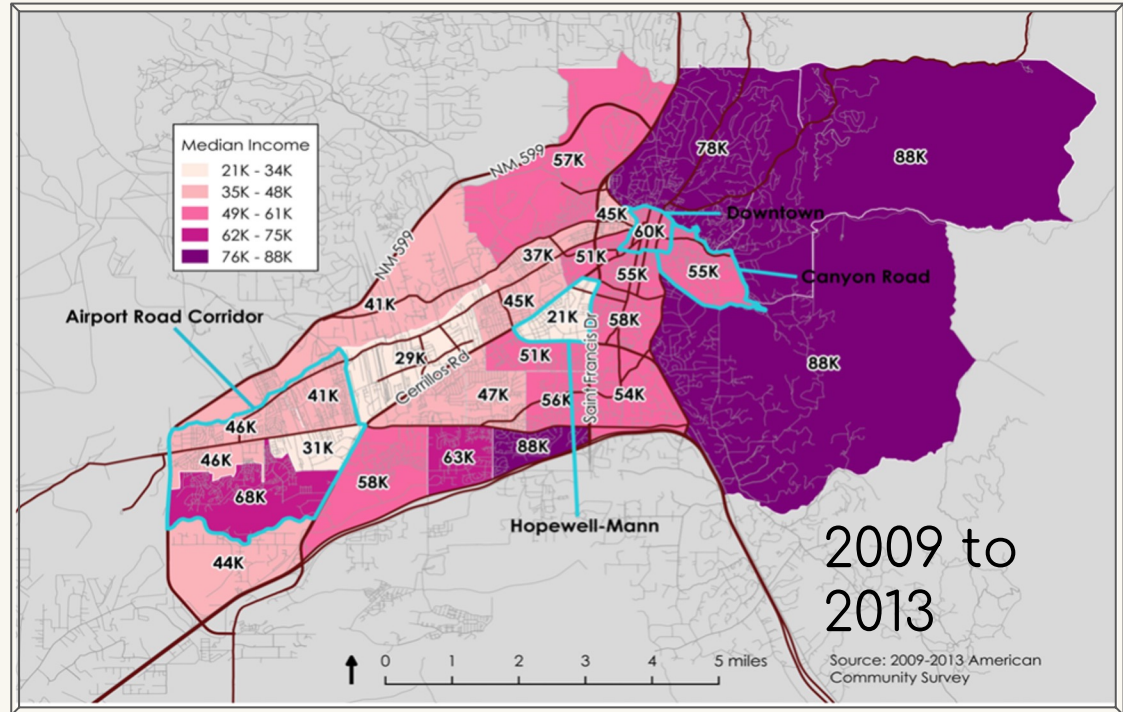
# INCOME

## Median Income

- Change in AMI, *Gentrification, Generational Cycles of Poverty*

## Rental Rates, Wages

- Rent Burden



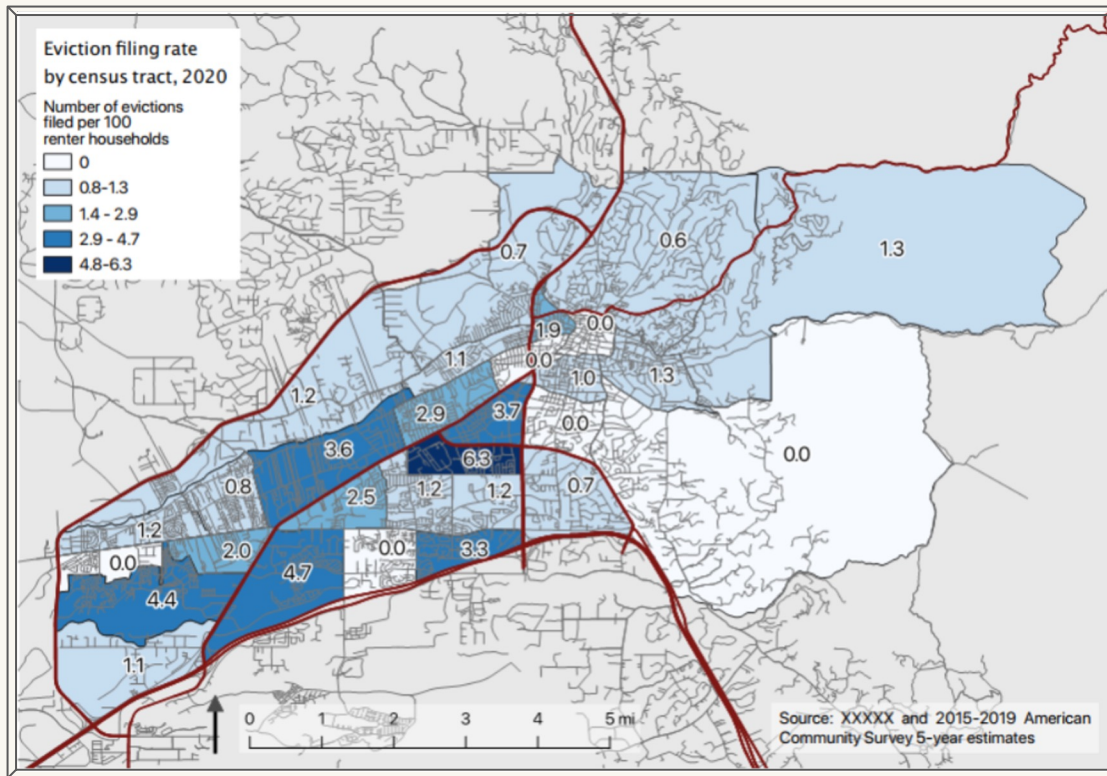
# EVICTIIONS

## Pre-Pandemic

- Incomplete
- Low-Income Hotspots
- Target financial and legal assistance to hotspots

## Beyond Recovery

- Debt calculations
- Housing needs





**Cathy Garcia**

**Communications Organizer**  
**cathy @ chainbreaker.org**



fb



insta



twitter

**@ Chainbreaker SF**

