



# Sheba Rogers

Detroit Justice Center  
Just Cities Innovation Lab  
Divest Invest Senior Program Manager

---

## NEA Project Summary:

A neighborhood profile of the current areas under ShotSpotter technology to better understand needs and opportunities for greater investments to address root causes of violence and harm.



**Founded on the belief that we cannot build cities that work for everyone without remedying the impacts of mass incarceration.**

---

Divest/ Invest Initiative  
Metro Detroit Restorative Justice Network  
Movement Lawyering  
Legal Services and Advocacy Practice  
Community Legal Advocacy  
Economic Equity Practice  
Narrative Shifting and Imagination

# Justice Department gives Detroit crime reduction programs ‘no effects’ ratings

🕒 February 8, 2023 @ Eli Newman

*National Institute of Justice gave the “no effects” rating to Detroit’s Ceasefire and Project Green Light programs.*





# Faulty Shotspotter gun crime surveillance system doesn't meet needs of Detroit's people

October 5, 2022 | 11:52 AM CDT | BY SAMMIE LEWIS

**ACLU**

## Technology used to pinpoint sound of gunshots in Detroit draws controversy over price, reliability

City looks to spend around \$8M

### NEWS & COMMENTARY

## Four Problems with the ShotSpotter Gunshot Detection System

A new investigation points to yet another problematic outcome of the technology's use and the company's lack of transparency.

## Detroit extends contract with controversial gunshot surveillance firm

**City leaders voted on Tuesday to expand Detroit's contract with ShotSpotter, after weeks of divisive debate**



# National Equity Atlas Fellowship Data Tool

---

- **Educational Factsheet (1-2 pages)**
  - Better understand who lives in the particular areas where ShotSpotter is located.
  - Elevate any gaps in community services and supports needed for residents.
  - Share data and need for greater investment in alternatives to ShotSpotter.
- **Our ‘Why’:**
  - Detroit communities are struggling with the impact of mass incarceration; significant divestment in schooling, libraries, community and health services; and affordable housing. Research shows that community-based alternatives are much more successful at addressing root causes of crime and improving public safety overall.
- **Audience:**
  - Community members interested in public safety, health and well-being of Detroiters; residents in current and prospective ShotSpotter neighborhoods; city officials.



# National Equity Atlas Fellowship Data Tool: Research Snapshot

---

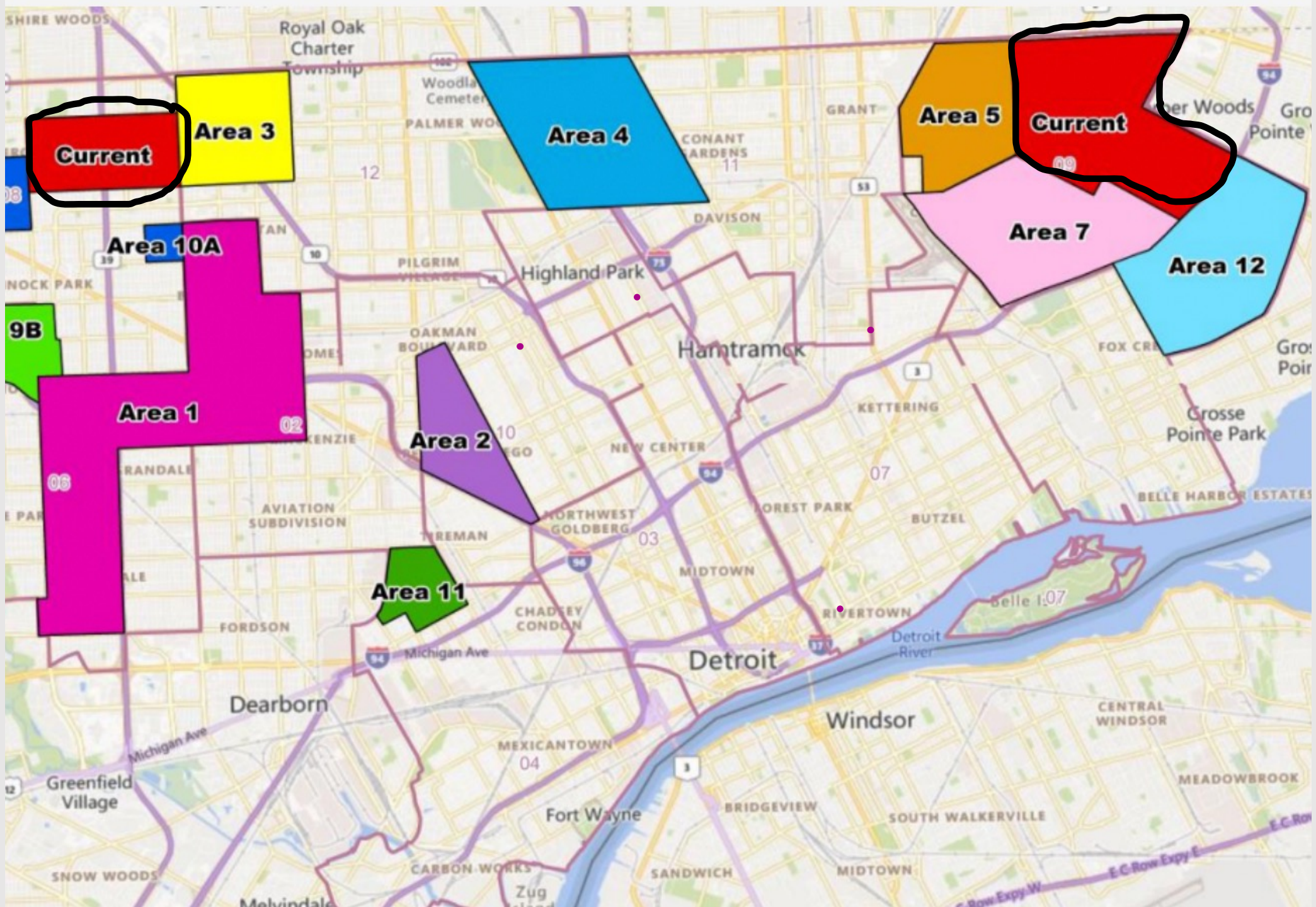
## Educational Factsheet (1-2 pages)

- ✓ **Demographics of Residents**  
*Age, Race, Gender, Unemployment Rate, etc.*
- ✓ **Family and Household Types**  
*Family Types; Renter and Owner Households, etc.*
- ✓ **Housing Occupancy and Affordability**  
*Increase/Decrease in Occupancy Status; Rent Burden, etc.*
- ✓ **Access to Community Services**  
*Parks/ Rec; Libraries, etc.*
- ✓ **Carceral Spending for City and County**

**National Equity Atlas**



**Civilytics Consulting**  
 *Measuring the pulse of civic life.*



12 Census Tracts in: [Wayne County, MI, Michigan](#)

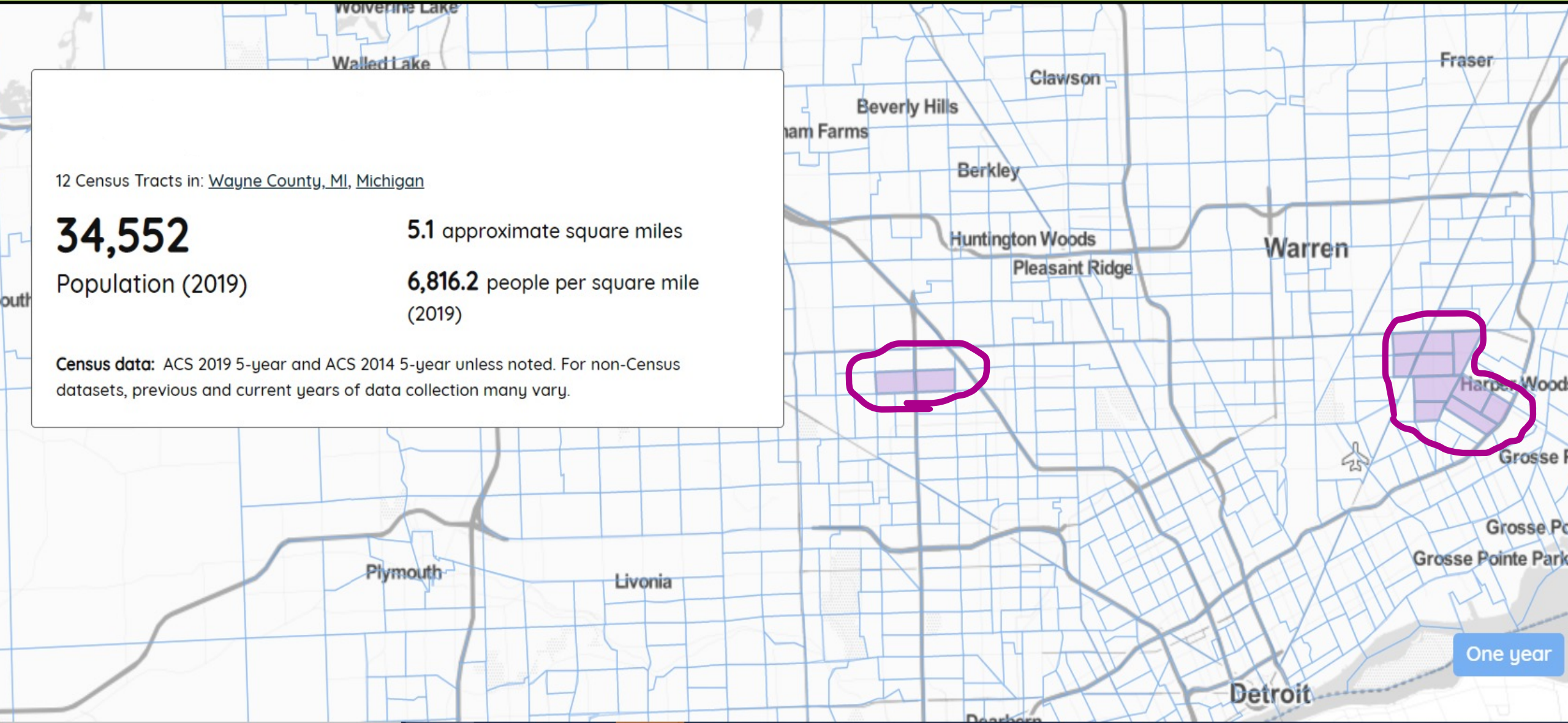
**34,552**

Population (2019)

**5.1** approximate square miles

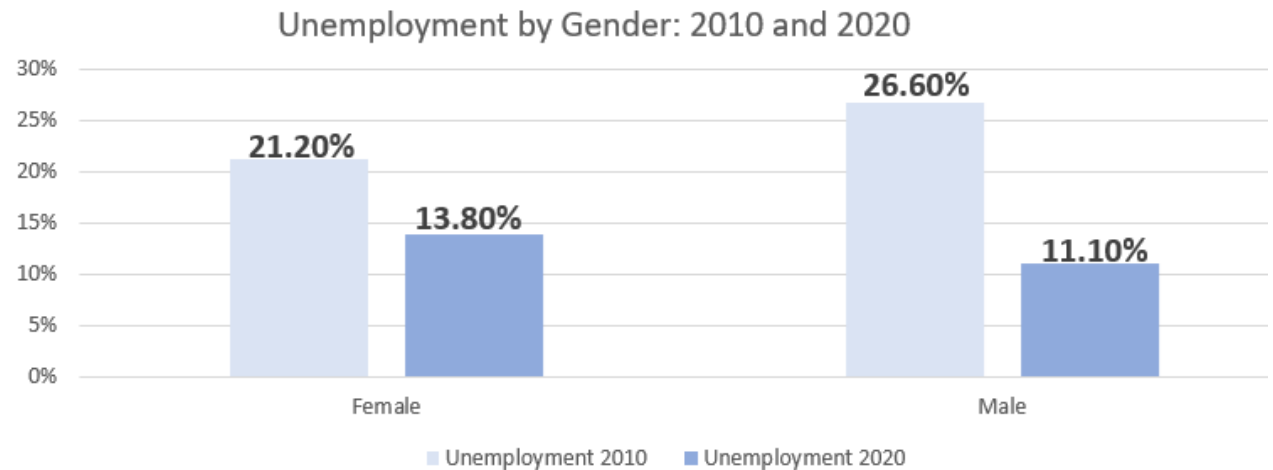
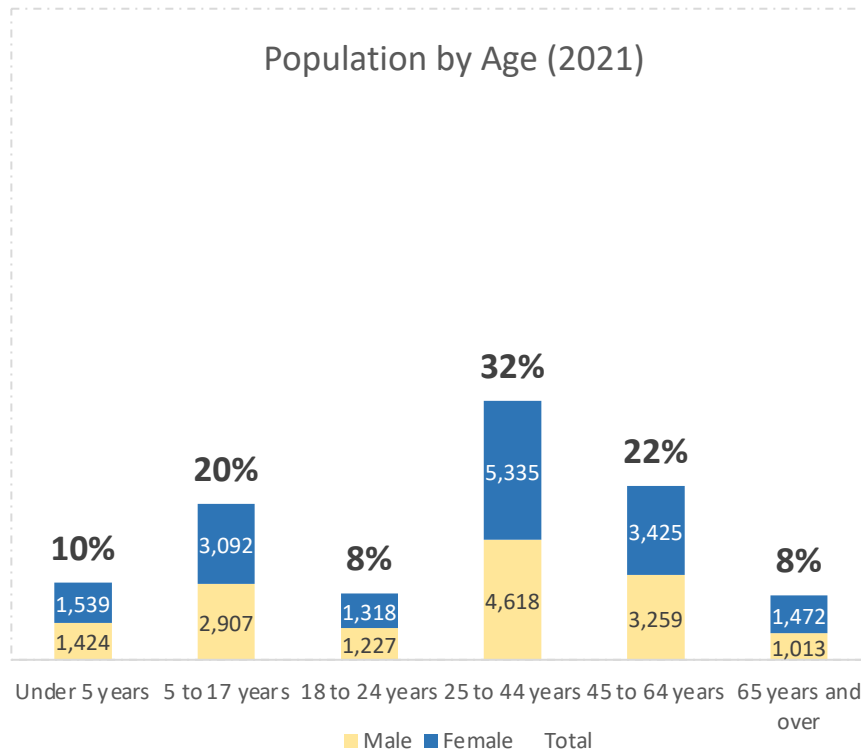
**6,816.2** people per square mile  
(2019)

**Census data:** ACS 2019 5-year and ACS 2014 5-year unless noted. For non-Census datasets, previous and current years of data collection many vary.





## Demographics of Residents



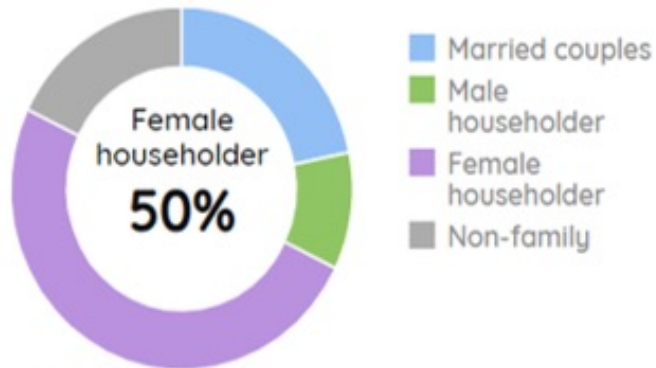
Total population: 30,629. The proportion of adults 25-44 (almost 10,000) and the proportion of children under 18 (almost 9,000) is higher in this area than across the city.



Overall, unemployment rate has gone down for men and women since 2010. In looking across the city, men in this area have a lower unemployment rate compared to 15% in Detroit overall. Unemployment is higher for women in this area.

## Family and Household Types

Population by household type (2019)



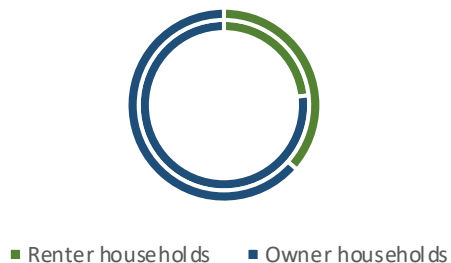
Percent of female households are higher in this area than Detroit and Wayne County

66.5% of households with children receive some form of government assistance.

92.5% of children in the area qualify for free and reduced priced lunch

27% below poverty in 2020, versus 32% in 2010

Renter or Owner Households



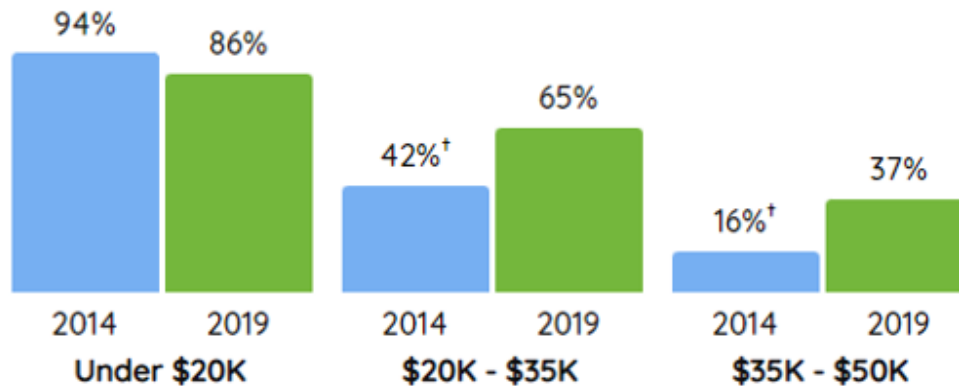
The number of owner households has decreased since 2010 while the number of renter households has almost doubled.



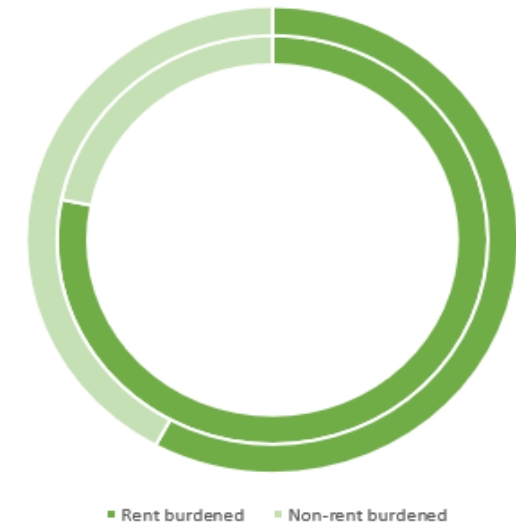
# National Equity Atlas Fellowship Data Tool: Factsheet Draft

## Housing: Affordability and Rent Burden

Percent of households spending 30% or more of household income



% of households who are rent burdened



Median costs for housing has increased since 2014. This cost is almost 20% higher than Detroit as a whole.



Almost 6 out of 10 renter households experience rent burden (58%)



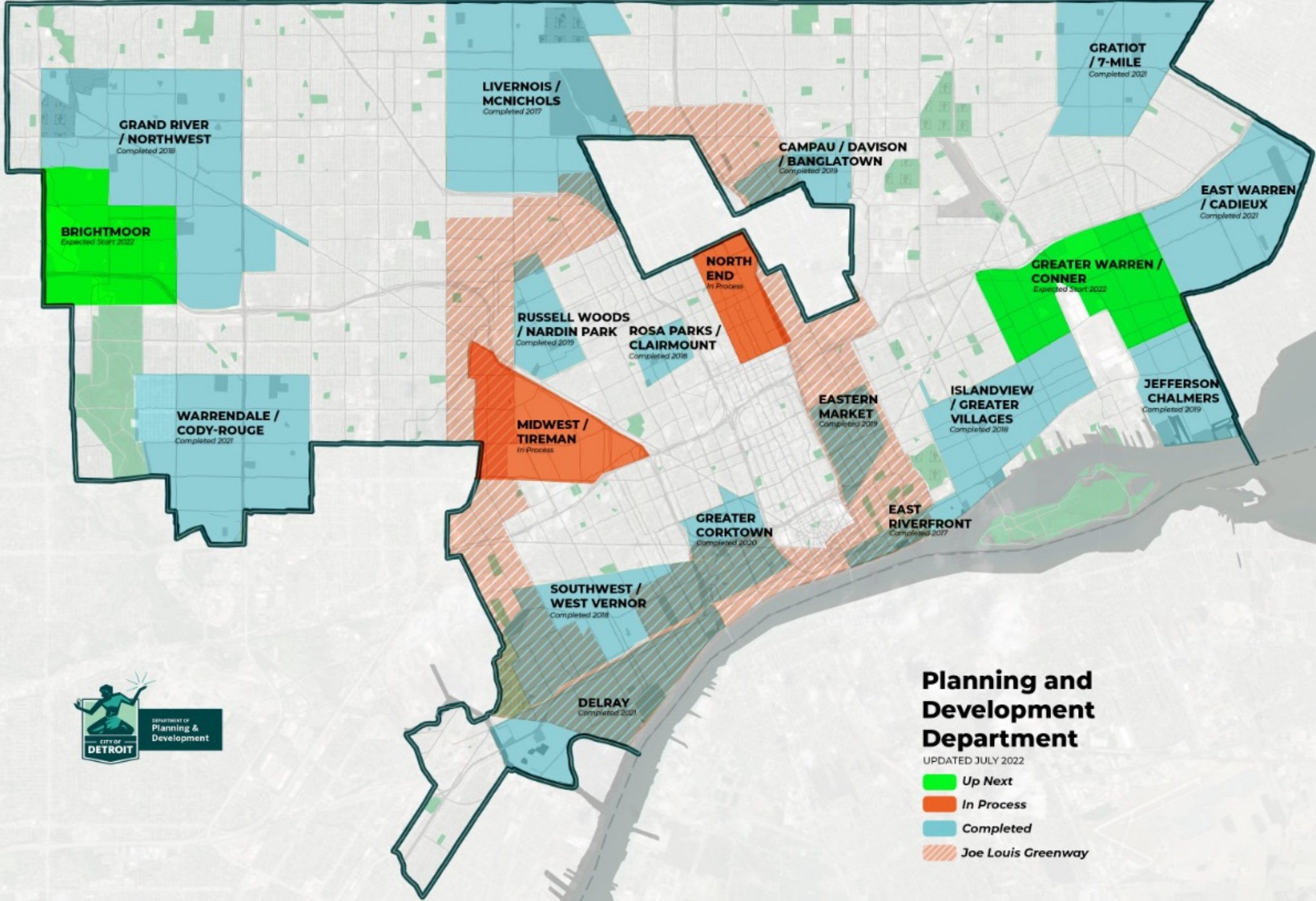
# National Equity Atlas Fellowship Data Tool: Factsheet Draft

## Carceral Spending for City and County

Spending per resident, Includes General Fund and Non-General Fund Spending



In Detroit, carceral spending is **12 times more** than spending on **libraries**; **8 times more** than spending on **health**; and **4 times more** than spending on **housing**.



## Planning and Development Department

UPDATED JULY 2022

- Up Next
- In Process
- Completed
- Joe Louis Greenway



**THANK YOU!**

Sheba Rogers  
Detroit Justice Center  
Just Cities Innovation Lab

**Stay Connected!**

**[www.detroitjustice.org](http://www.detroitjustice.org)**